

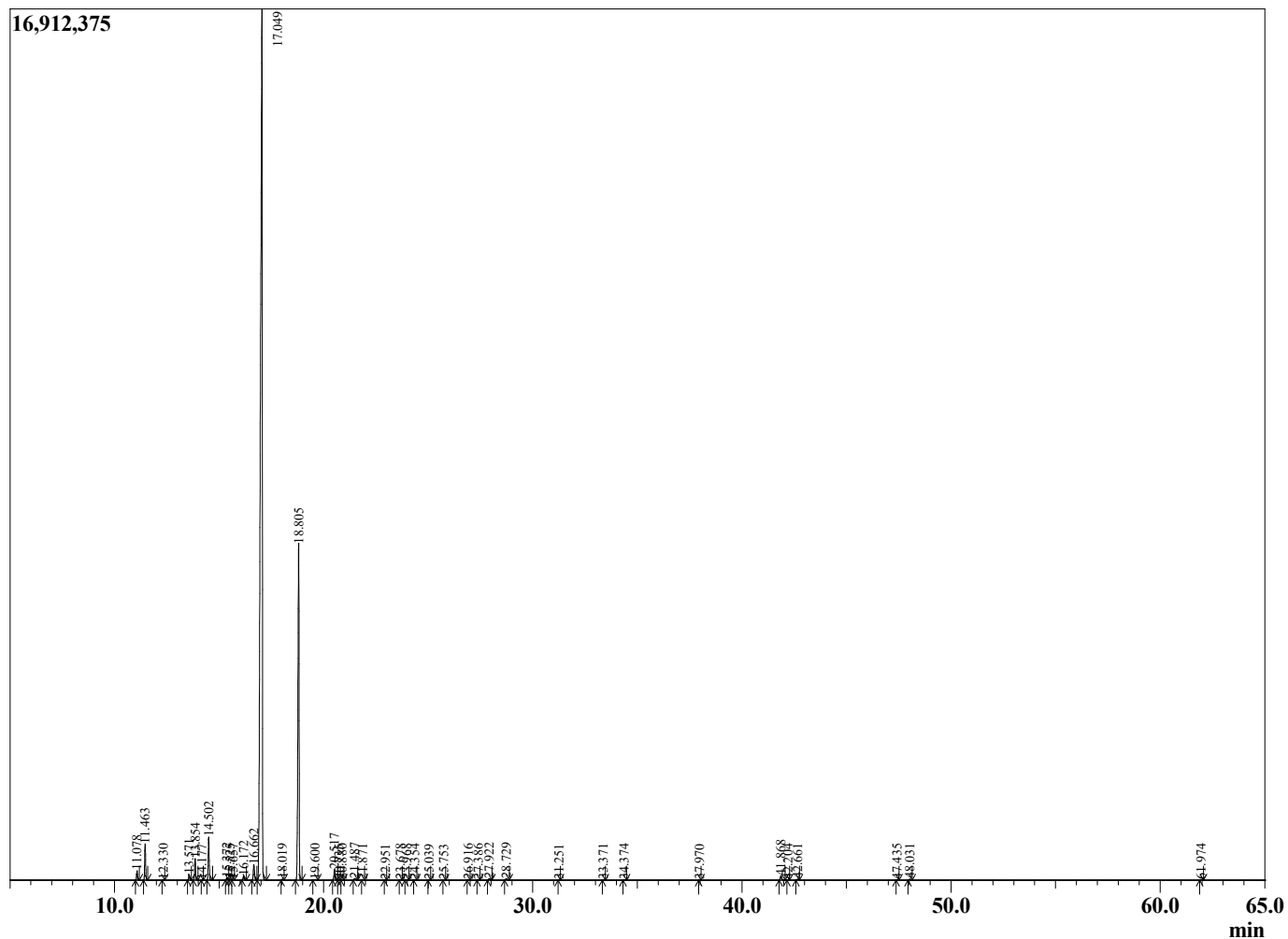
Sample Information

Sample Type : Essential Oil  
 Sample Name : Citrus deliciosa  
 Injection : 0.10  
 Volume :

Mandarin Red  
 Lot# ITX25-XH  
 Country: Italy



Chromatogram Citrus deliciosa



R.Time	Name	Area%
4.175	Heptane	0.00
11.078	alpha-Thujene	0.38
11.463	alpha-Pinene	1.50
12.330	Camphene	0.01
13.571	Sabinene	0.25
13.854	beta-Pinene	0.94
14.177	Unidentified	0.01
14.502	Myrcene	1.93
15.372	Octanal	0.12
15.525	alpha-Phellandrene	0.05
15.657	delta-3-Carene	0.03
16.172	alpha-Terpinene	0.19
16.662	para-Cymene	0.86
17.049	Limonene	73.63
18.019	trans-beta-Ocimene	0.04
18.805	gamma-Terpinene	18.56
19.600	trans-para-Mentha-2,8-diene	0.05
20.517	Terpinolene	0.53
20.735	Fenchone	0.01
20.880	para-Cymenene	0.01
21.487	Linalool	0.10
21.871	Nonanal	0.02
22.951	trans-para-Mentha-2,8-dienol	0.01
23.678	cis-Limonene oxide	0.03
23.968	trans-Limonene oxide	0.03
24.354	Epoxyterpinolene	0.02
25.039	Citronellal	0.01
25.753	Unidentified	0.01
26.916	Terpinen-4-ol	0.02
27.386	para-Cymen-8-ol	0.01
27.922	alpha-Terpineol	0.09
28.729	Decanal	0.09
31.251	Carvone	0.01
33.371	Perillaldehyde	0.01
34.374	Carvacrol	0.02
37.970	Unidentified	0.01
41.868	Dimethylantranilate	0.26
42.204	Dodecanal	0.01
42.661	beta-Caryophyllene	0.05
47.435	alpha-Selinene	0.01
48.031	trans,trans-alpha-Farnesene	0.06
61.974	alpha-Sinensal	0.04
		100.00